



FIG. 2. Photograph of RbI crystal at a very early stage of its transformation to the high pressure phase. The near face of the crystal is in clear focus. Note the steps in the cleaved surface, the transformed "island" of surface on the back face of the crystal at the bottom of the photograph, and the island on the near surface at the upper right.

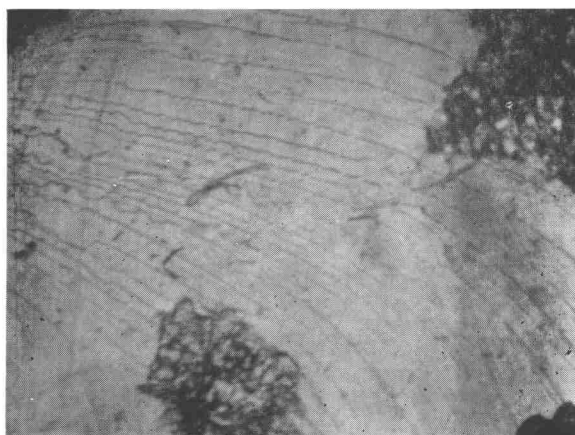


FIG. 3

(See overleaf for figure caption)



FIG. 4

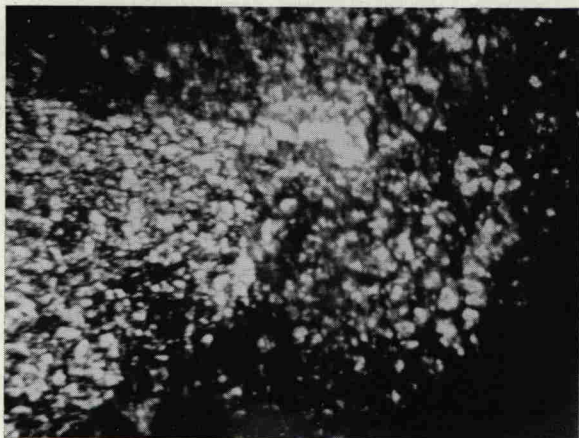


FIG. 5

FIGS. 3-5. Progress of the transformation on the *surface* of the crystal.

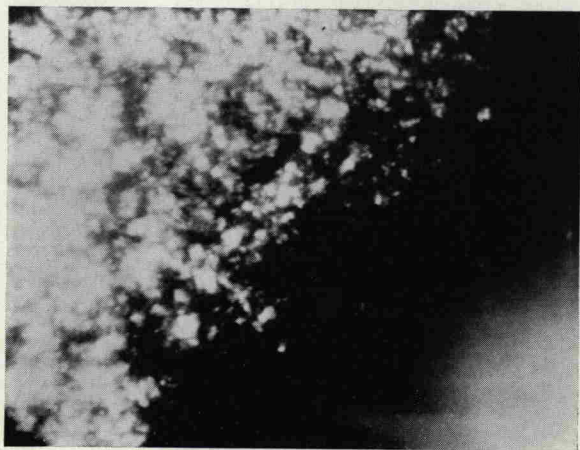


FIG. 6 Loss of transparency due to scattering from the transformed material in the *interior* of the crystal. Exposure time for Fig. 6 is considerably larger than for Figs. 3-5.